

Directions

Viewings

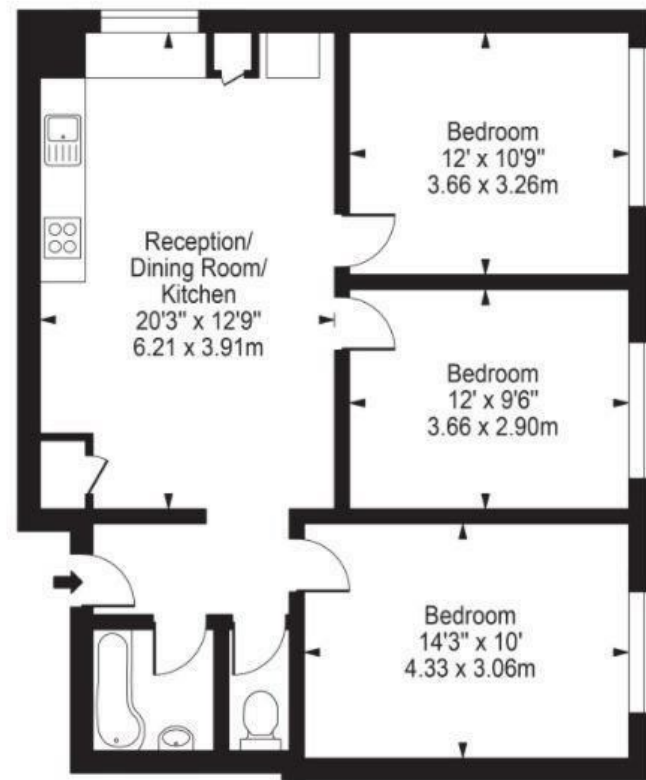
Viewings by arrangement only. Call 02087436444 to make an appointment.

EPC Rating

D

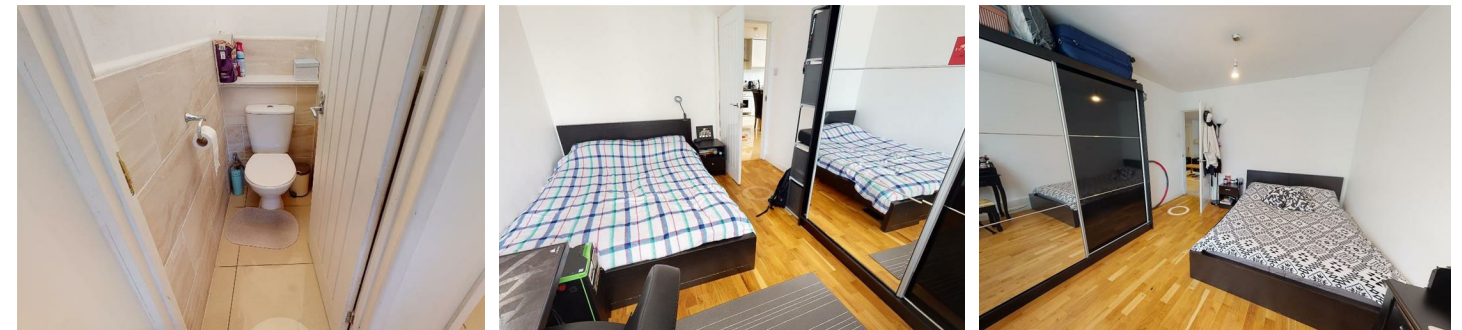
Energy Efficiency Rating		Current	Potential
Very energy efficient - lower running costs			
(92 plus) A			
(81-91) B			
(69-80) C			
(55-68) D		62	73
(39-54) E			
(21-38) F			
(1-20) G			
Not energy efficient - higher running costs			
England & Wales		EU Directive 2002/91/EC	

Approx. Gross Internal Area 774 Sq Ft - 71.87 Sq M



First Floor

For Illustration Purposes Only - Not To Scale



Flat 2 Roseford Court 34 Shepherds Bush Green, London, W12 8RA

£3,200

Flat 2 Roseford Court 34 Shepherds Bush Green,

London W12 0DA

A well-presented and conveniently located flat overlooking Shepherds Bush Green, offering an ideal rental opportunity in a vibrant and well-connected part of West London. Positioned within a charming period building, the property is perfectly suited to professionals seeking both comfort and accessibility.

The flat comprises a bright and spacious reception room with large windows providing pleasant views over the Green, creating a welcoming living environment. The separate kitchen is fitted with modern units and offers ample storage and workspace. The bedroom is generously sized, providing a comfortable and quiet retreat, while the bathroom is well-maintained and finished to a good standard.

Ideally situated just moments from the amenities of Shepherd's Bush, residents benefit from a wide selection of shops, restaurants, and cafes, as well as the nearby Westfield London shopping centre. Excellent transport links are close at hand, including Shepherd's Bush Underground and Overground stations, offering quick and easy access into Central London and surrounding areas.

Available to let, this property offers a fantastic opportunity to enjoy convenient London living in a sought-after location.



Council Tax Band: B

